

**■ CARACTERISTICAS**

1. Impulsor Semi-vórtice de hule uretano con agitador para suspender sólidos y permitir el bombeo de arena y material fibroso.
2. Motor altamente eficiente de trabajo, continuo lleno de aire, embobinado de cobre con aislamiento clase B, minimizando los costos de operación.
3. Sensor interno térmico y de amperaje, previene fallas del motor debido a sobrecarga o funcionamiento accidental en condiciones secas
4. Doble sello mecánico interno con capas de carburo de silicio (superior e inferior), corriendo en una cámara llena de aceite, proporciona el más eficiente y durable diseño de sello disponible.
5. Doble sellado, permanente lubricado, baleros de bola C3 de alta temperatura para una vida

B-10 de 60,000 horas proporciona una vida. Operacional extendida

**■ APPLICATIONS**

1. Comercial, industrial aguas residuales y drenado de sitios de construcción.
2. Remoción de Sedimentos de pequeños pozos, correderos o cuencas.
3. Cascadas decorativas y fuentes.
4. Abastecimiento de aguas crudas, ríos o lagos


**■ SPECIFICATIONS**

Tamaño de Descarga  
 Rango de Potencia

Capacidad  
 Cabeza  
 Máxima Temperatura del Agua  
 Materiales de Construcción  
 Carcasa  
 Impulsor  
 Eje  
 Armazón del Motor  
 Soportes  
 Sello Mecánico  
 Sello Superior  
 Sello Inferior

Elastómeros  
 Tipo de Impulsor

Capacidad de manejo de Sólidos  
 Características del Motor  
 Tipo, Velocidad, Hz.  
 Voltaje, Fase  
 Aislamiento  
 Rodamientos  
 Accesorios

Modo de Operación

**■ STANDARD**

2" Npt (50 mm)  
 1/2 Hp. (.4Kw)

15 - 50 Gpm (.056 - .19)  
 5 Ft. - 34 Ft. (1.5 - 10.3 m)  
 104 F. (40 C.)

Hierro Dúctil Moldeado  
 Hule Uretano  
 Acero Inoxidable 403  
 Aleación de Aluminio  
 Acero Inoxidable 304

Cerámica / Carbón  
 Carburo de Silicio / Carburo de Silicio  
 NBR (Hule Nitril Buna)  
 Semi-vórtice, manejo de sólidos  
 1" x 3/8"

Aire LLeno, 3600 R.P.M, 60 Hz.  
 115 V. 1 Fase.  
 Clase B  
 Pre-lubricados, Doble Sello.  
 Cable de Poder Sumergible  
 20' (6,2 m)  
 Manual

**■ OPTIONS**

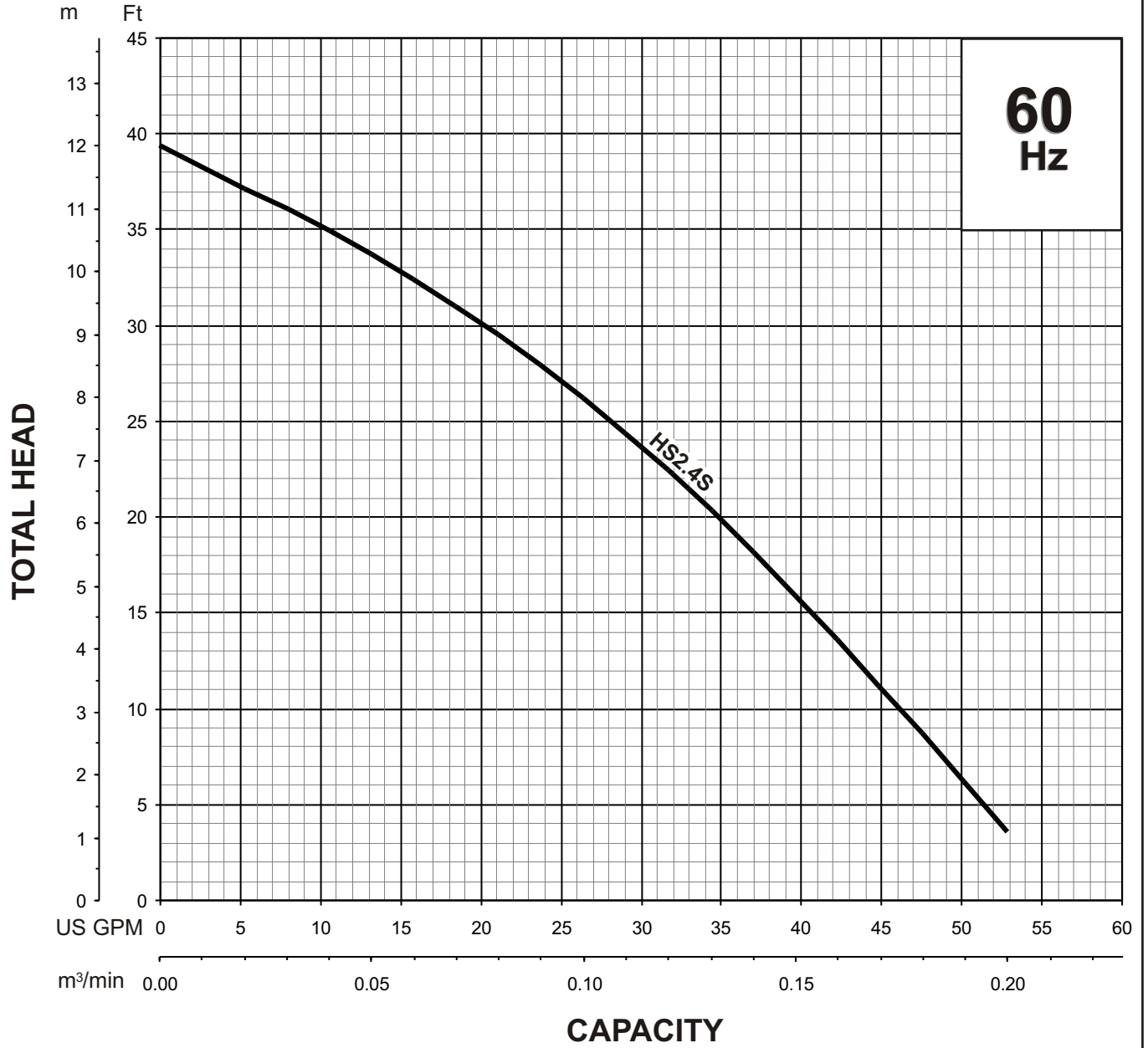
Longitud como sea Requerida  
 TS-301 Interruptor Flotador.



**HS - SERIES**  
**SEMI-VORTEX - WASTEWATER PUMP**

**GROUP PERFORMANCE**  
**RANGE**

**GROUP PERFORMANCE RANGE**

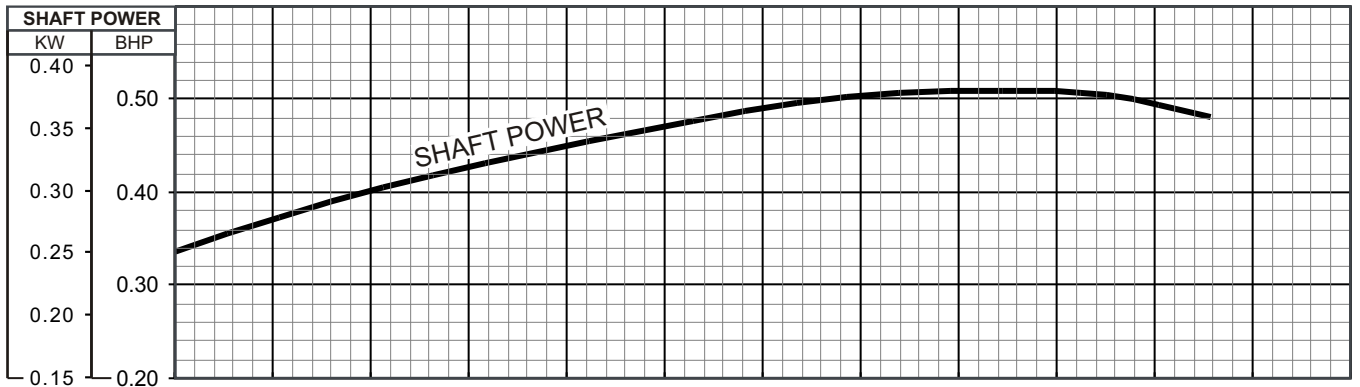
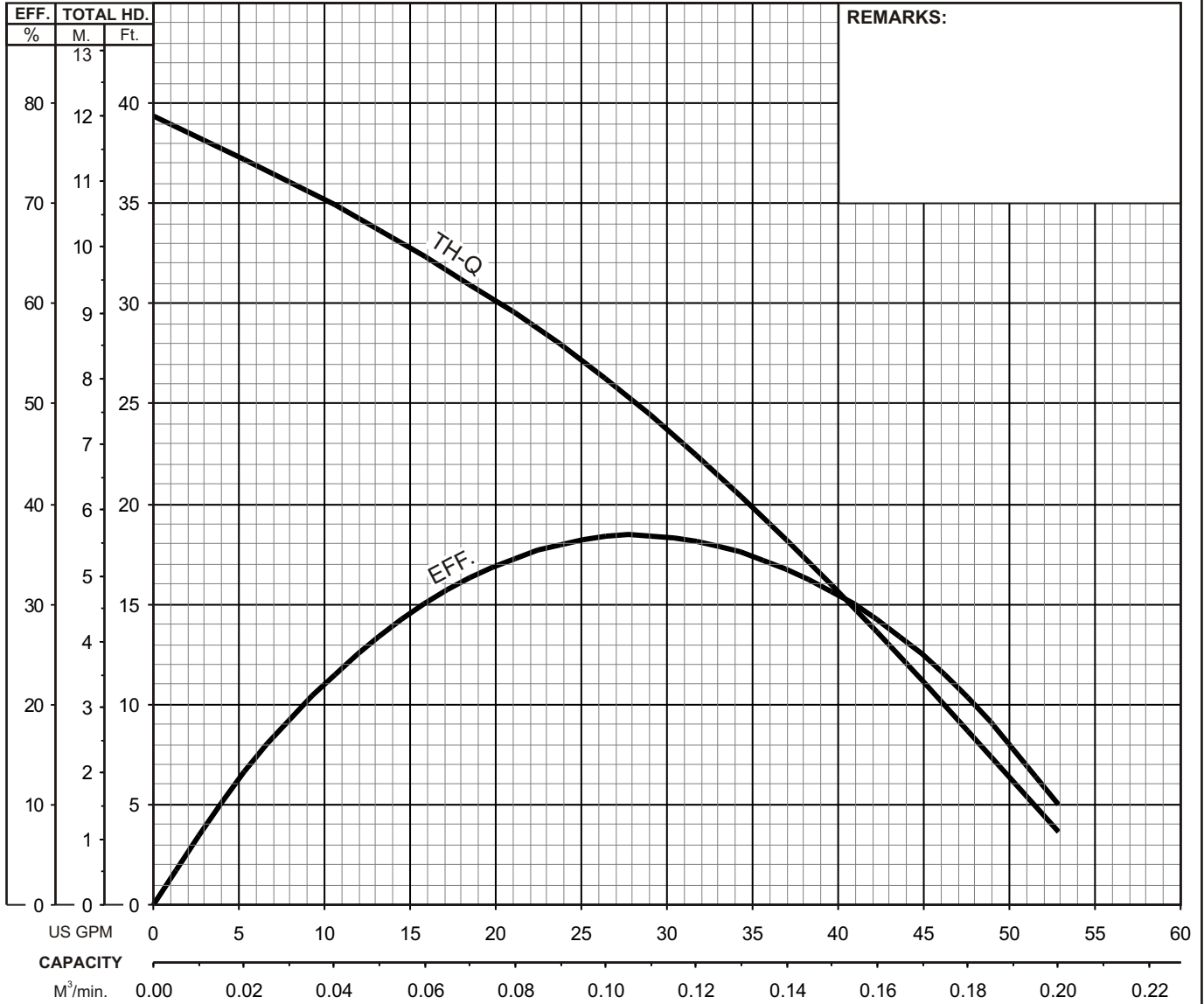


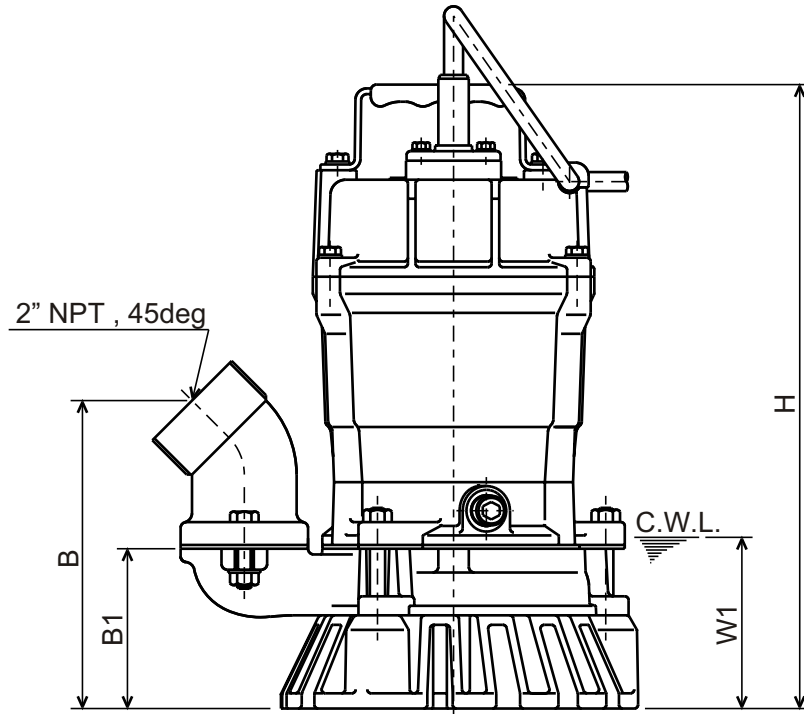
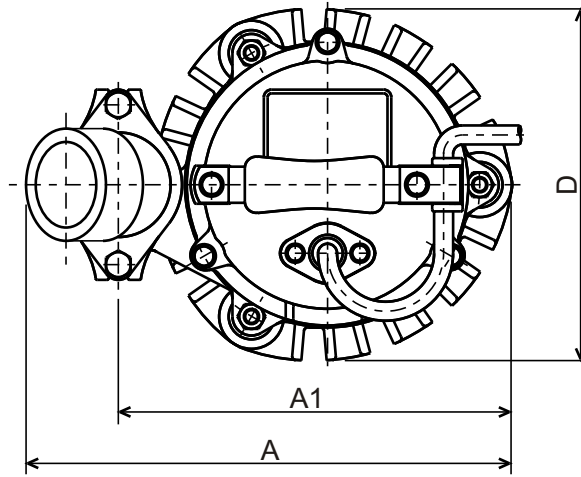


## HS - SERIES PERFORMANCE CURVE

# HS2.4S-61

| MODEL                         |      | BORE    | HP        | KW   | RPM       | SOLIDS DIA   | LIQUID | SG.             | VISCOSITY | TEMP.      |
|-------------------------------|------|---------|-----------|------|-----------|--------------|--------|-----------------|-----------|------------|
| HS2.4S-61                     |      | 2"/50mm | 0.54      | 0.40 | 3350      | 0.375"/9.5mm | Water  | 1.0             | 1.81 CST  | 60°F       |
| PUMP TYPE                     |      | PHASE   | VOLTAGE   |      | AMPERAGE  |              | HZ     | STARTING METHOD |           | INS. CLASS |
| Semi-Vortex - Wastewater Pump |      | Single  | 110 / 115 |      | 5.4 / 5.2 |              | 60     | Capacitor Start |           | B          |
| CURVE No.                     | DATE | PHASE   | VOLTAGE   |      | AMPERAGE  |              | HZ     | STARTING METHOD |           | INS. CLASS |
| -                             | -    | -       | -         |      | -         |              | -      | -               |           | -          |





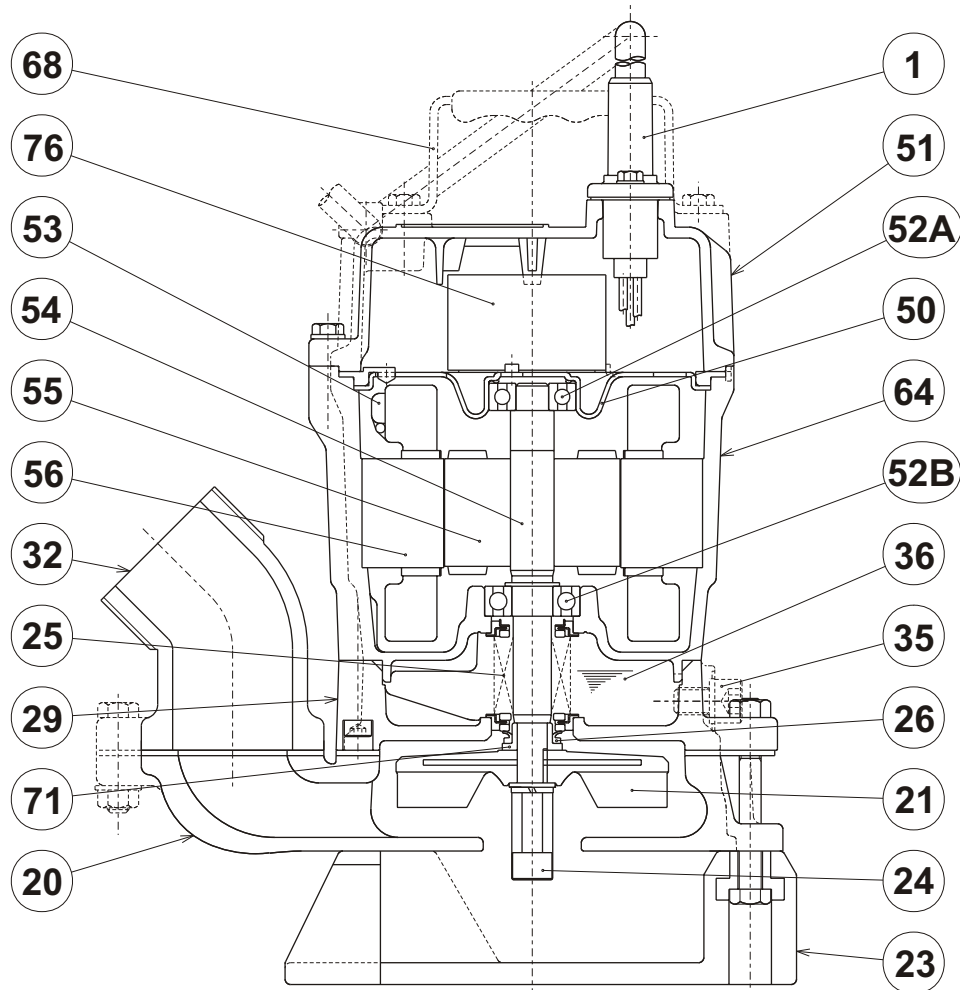
C.W.L. : Continuous running Water Level

**DIMENSIONS:USCS (Inch)**

| Model     | HP  | NOM. SIZE | Pump & Motor |       |       |        |        |          | C.W.L. | Wt. (lbs.) |
|-----------|-----|-----------|--------------|-------|-------|--------|--------|----------|--------|------------|
|           |     |           | A            | A1    | B     | B1     | D      | H        | W1     |            |
| HS2.4S-61 | 1/2 | 2"        | 10 1/16      | 8 1/8 | 6 3/8 | 3 5/16 | 7 5/16 | 12 15/16 | 3 1/2  | 25         |

**DIMENSIONS:METRIC (mm)**

| Model     | kW   | NOM. SIZE | Pump & Motor |     |     |    |     |     | C.W.L. | Wt. (kg) |
|-----------|------|-----------|--------------|-----|-----|----|-----|-----|--------|----------|
|           |      |           | A            | A1  | B   | B1 | D   | H   | W1     |          |
| HS2.4S-61 | 0.40 | 50        | 255          | 207 | 162 | 84 | 185 | 328 | 90     | 11.3     |



| ITEM# | DESCRIPTION          | MAIN MATERIAL / NOTE               | ASTM, AISI CODE | RELATED DIN CODE   | Q'TY |
|-------|----------------------|------------------------------------|-----------------|--------------------|------|
| 1     | Power Cable          | PVC Sheath AWG16/3-20ft            |                 |                    | 1    |
| 20    | Pump Casing          | Cast Iron                          | A48 Class 35    | 1691/GG20          | 1    |
| 21    | Impeller             | Urethane Rubber                    |                 |                    | 1    |
| 23    | Suction Strainer     | PVC                                |                 |                    | 1    |
| 24    | Agitator             | Steel                              | A283 Grade D    | 17100 RSt 46-2     | 1    |
| 25    | Mechanical Seal      | Silicon Carbide / W-14VL           |                 |                    | 1    |
| 26    | V-Ring               | Nitrile Butadiene Rubber           |                 |                    | 1    |
| 29    | Oil Casing           | Cast Iron                          | A48 Class 35    | 1691/GG20          | 1    |
| 32    | Discharge Connection | Cast Iron / NPT 2"                 | A48 Class 35    | 1691/GG20          | 1    |
| 35    | Oil Plug             | Stainless Steel                    | AISI 304        | 17440 X5 CrNi 18-9 | 1    |
| 36    | Lubricant            | Turbine Oil ISO VG32 or SAE10W/20W |                 |                    | 1    |
| 50    | Motor Bracket        | Carbon Steel                       | A109 Class 91   | 1624-87 St 2,3,4   | 1    |
| 51    | Motor Head Cover     | Aluminum Alloy Die Casting         | B85 , A383      | N/A (BS Code LM 2) | 1    |
| 52A   | Upper Bearing        | #6201ZZC3                          |                 |                    | 1    |
| 52B   | Lower Bearing        | #6202ZZC3                          |                 |                    | 1    |
| 53    | Motor Protector      |                                    |                 |                    | 1    |
| 54    | Shaft                | Stainless Steel                    | AISI 403        | 17440 X15 Cr 13    | 1    |
| 55    | Rotor                |                                    |                 |                    | 1    |
| 56    | Stator               |                                    |                 |                    | 1    |
| 64    | Motor Housing        | Aluminum Alloy Die Casting         | B85 , A383      | N/A (BS Code LM 2) | 1    |
| 68    | Handle               | Carbon Steel + Natural Rubber      | A109 Class 91   | 1624-87 St 2,3,4   | 1    |
| 71    | Shaft Sleeve         | Stainless Steel                    | AISI 304        | 17440 X5 CrNi 18-9 | 1    |
| 76    | Capacitor            |                                    |                 |                    | 1    |