

Application

- Can be used to transfer clean water or other liquids similar to water in physical and chemical properties
- Suitable for small living water supply, automatic water sprinkler system, small air conditioner system or supporting equipment etc.

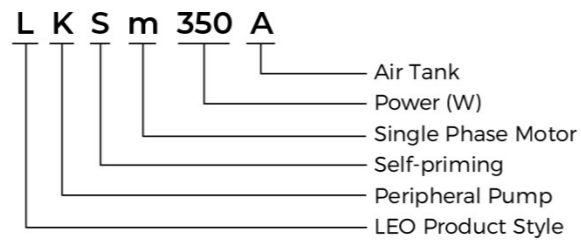
Pump

- With 2L pressure tank for automatic operation
- Special anti-rust treatment
- Brass impeller
- AISI 304 shaft
- Max. liquid temperature: +60°C
- Max. suction: +9 m

Motor

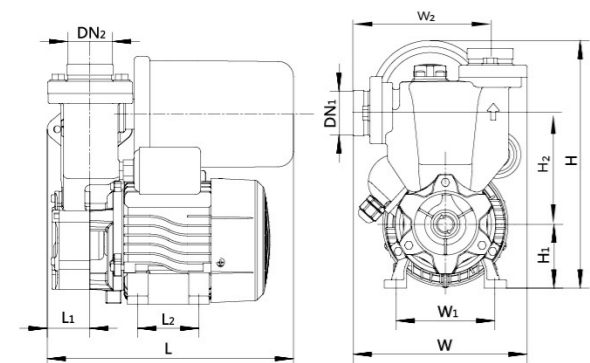
- Low noise&Long life bearing
- Cooper winding
- Built-in thermal protector
- Insulation class: F
- Protection class: IPX4
- Max. ambient temperature: +50°C

Identification Codes



Technical Data

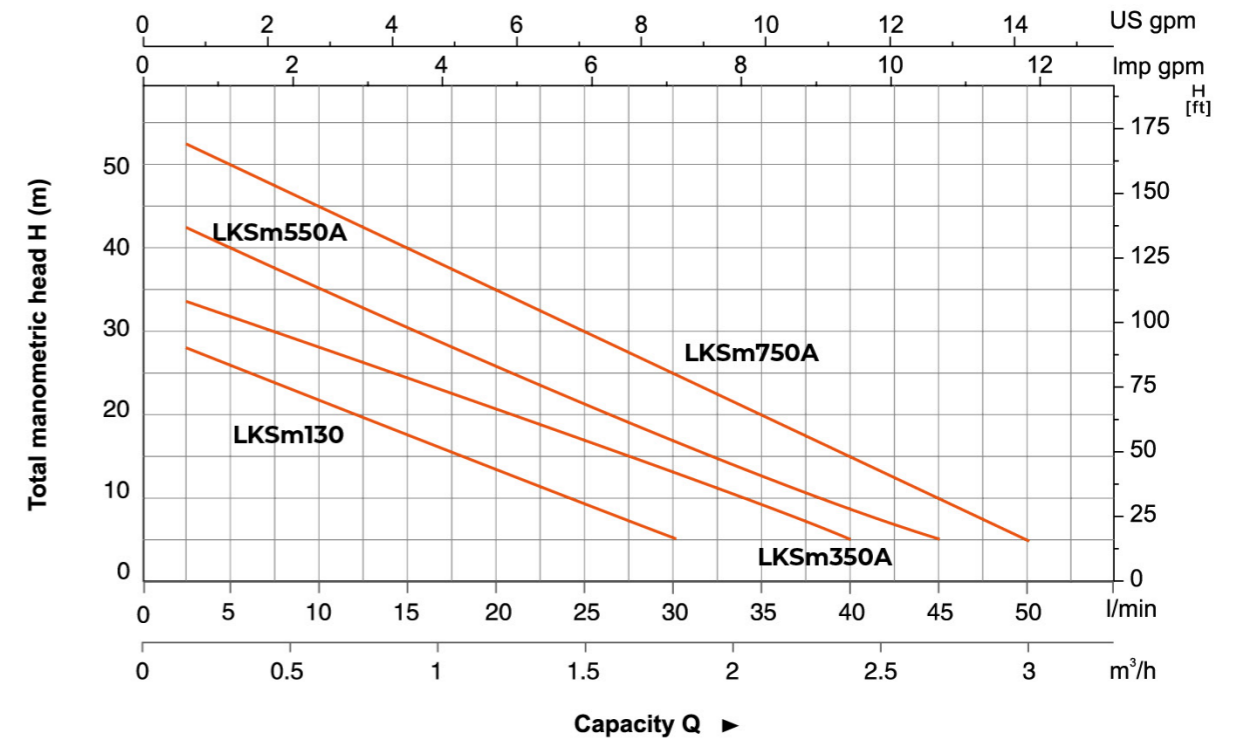
Model	Power		Q(m³/h)	Q(l/min)												
	kW	HP		0	0.3	0.6	0.9	1.2	1.5	1.8	2.1	2.4	2.7	3.0		
LKSm130	0.125	0.17	H (m)	30	22	18	15	10	5	3	-	-	-	-		
LKSm350A	0.35	0.47		35	32	27	23	18	15	12	8	3	-	-		
LKSm550A	0.55	0.75		45	40	35	30	25	20	15	10	8	3	-		
LKSm750A	0.75	1.0		55	50	45	40	35	30	25	20	15	10	5		



Dimension

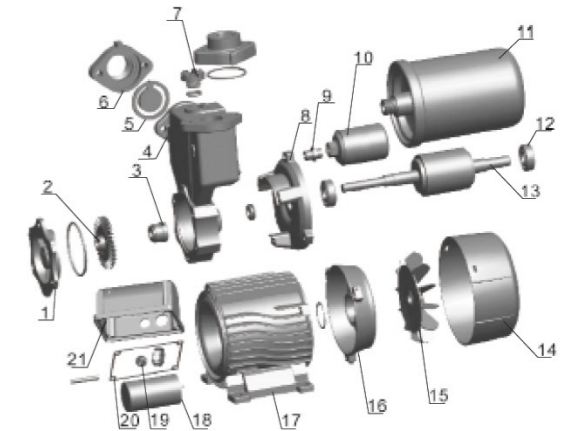
Model	DN1	DN2	L (mm)	W (mm)	H (mm)	L1 (mm)	W1 (mm)	W2 (mm)	H1 (mm)	H2 (mm)
LKSm130	1"	1"	256	165	243	60	97	133	63	107.5
LKSm350A	1"	1"	256	166	245	60	97	134	63	110
LKSm550A	1"	1"	260	177	253	90	112	146	75	113.5
LKSm750A	1"	1"	260	177	260	90	112	146	75	113.5

Hydraulic Performance Curves



Materials Table

No.	Part	Material	No.	Part	Material
1	Pump bonnet	Brass/Cast iron	15	Fan	PP
2	Impeller	Brass	16	Rear cover	ZL102
3	Mechanical seal	Carbon/Ceramic	17	Stator	
4	Pump body	HT200	18	Capacitor	
5	Check valve	NBR	19	Cable holder	NBR
6	Outlet connector	HT200	20	Sealing ring	NBR
7	Filling plug	Brass	21	Terminal box	ABS
8	Front plate	HT200			
9	Bend	Iron			
10	Pressure switch				
11	Pressure tank	Iron			
12	Bearing				
13	Rotor				
14	Fan cover	PP			



Package Information

Model	GW (Kgs)	L (mm)	W (mm)	H (mm)	Quantity (PCS/20'TEU)
LKSm130	8.16	285	195	290	1603
LKSm350A	8.6	285	195	290	1603
LKSm550A	12	290	215	305	1421
LKSm750A	13.25	290	215	310	1421

