



Application

- This series of pumps are widely used in industry, agriculture, studied the breeding, mines, construction sites, municipal sewage and so on, can be pumping containing short fibers, confetti, sediment and other solid particles or soft solid objects, such as mud, grey water, life wastewater, sewage, etc., is an agricultural irrigation and drainage, digging, and the ideal water conservancy equipment from the construction site. However, it is not suitable for the occasions with explosion-proof requirements.

Pump

- A variety of installation methods, which can be connected with hoses, hard pipes and coupling installations.
- Cast iron pump body and support under special anti-rust treatment
- AISI 304 shaft
- Easy maintenance, high efficiency and energy saving
- Max. liquid temperature: +60°C
- Max. suction: 5 m

Motor

- Low noise&Long life bearing
- Motor with copper winding
- Insulation class: F
- Protection class: IPX4
- Max. ambient temperature: +50°C

Identification Codes

XHS m 4000

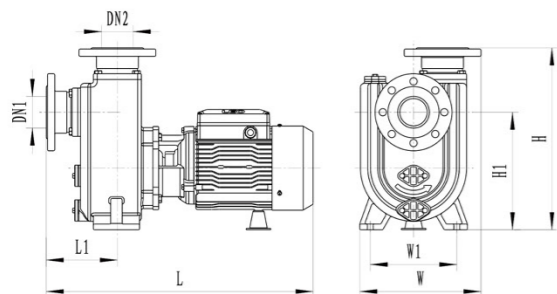
- XHS: Self-priming Centrifugal Pump
- m: Single Phase Motor (Omitted for three-phase motor)
- 4000: Power (HPx1000)

Technical Data

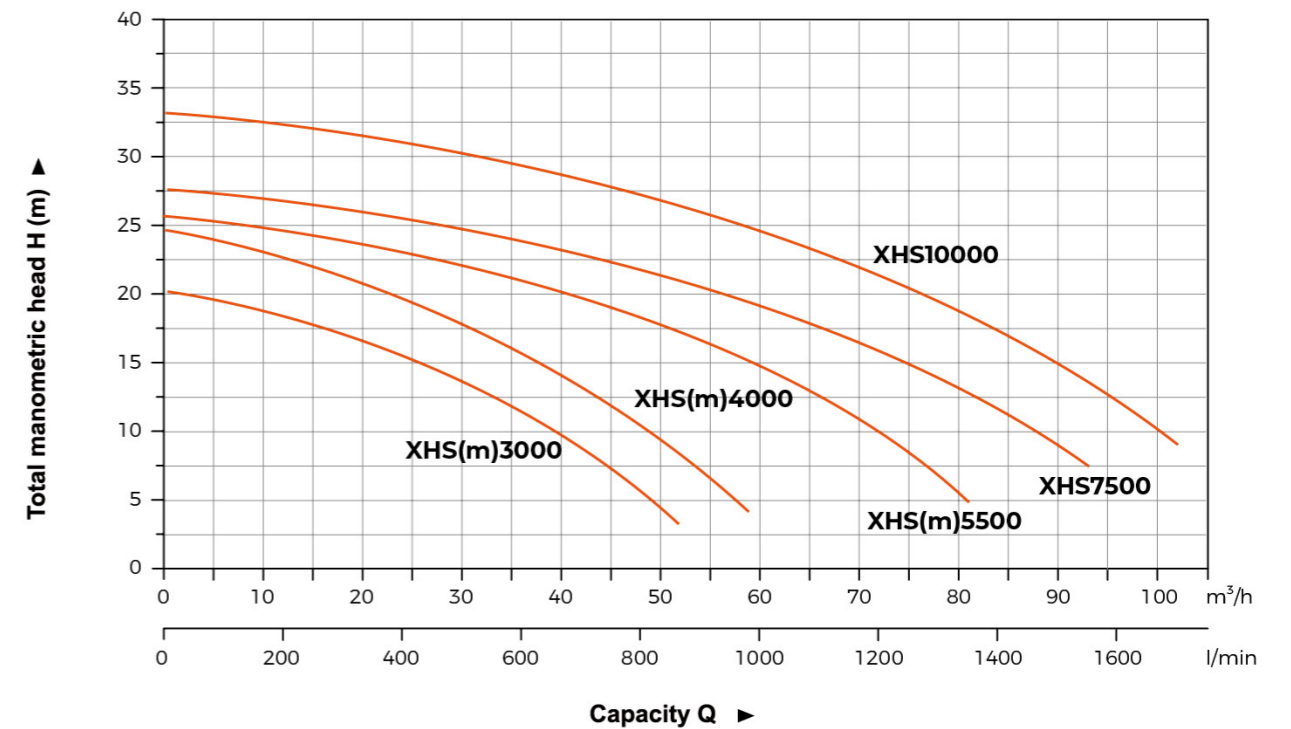
Model		Power		Q(m ³ /h)																	
Single Phase	Three Phase	KW	HP	0	5	10	12	15	20	25	30	35	40	45	50	60	65	70	80	90	100
XHSm3000	XHS3000	2.2	3	20	20	19	19	18	17	15	14	12	10	8	5	-	-	-	-	-	-
XHSm4000	XHS4000	3	4	25	24	23	23	22	21	20	18	16	14	12	10	-	-	-	-	-	-
XHSm5500	XHS5500	4	5.5	26	25	25	25	24	24	23	22	22	21	19	18	15	13	11	6	-	-
-	XHS7500	5.5	7.5	28	27	27	27	27	26	26	25	24	23	22	21.5	19	18	16	13	9	-
-	XHS10000	7.5	10	33	33	33	33	32	32	31	31	30	29	28	27	24	23	22	19	15	10

Dimension

Model	DN1	DN2	L (mm)	L1 (mm)	W (mm)	W1 (mm)	H (mm)	H1 (mm)
XHS(m)3000	2.5"	2.5"	582	165	274.5	200	408	254
XHS(m)4000								
XHS(m)5500	3"	3"	706	185	315.5	230	472	305
XHS7500								
XHS10000								

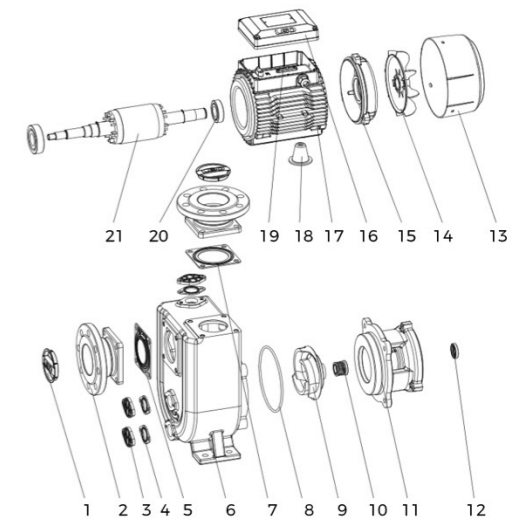


Hydraulic Performance Curves



Materials Table

No.	Part	Material	No.	Part	Material
1	Dust cover	PE	13	Fan cover	08F/PP-GF10
2	Inlet flange	HT200	14	Fan	PP-GF30
3	Drain flange	HT200	15	Rear cover	HT200/ADC12
4	Drain gasket	NBR	16	Cover box	ABS
5	Inlet check valve	NBR	17	Stator	
6	Pump body	HT200	18	Brace	HT200/PA6-GF25
7	Outlet gasket	NBR	19	Capacitor	
8	O-ring sea	NBR	20	Bearing	
9	Impeller	HT200	21	Rotor	
10	Mechanical seal				
11	Support	HT200			
12	Oil seal				



Package Information

Model	GW (Kgs)	L (mm)	W (mm)	H (mm)	Quantity (PCS/20'TEU)
XHS(m)3000	64.9(67.7)	643	319	556	253
XHS(m)4000	69.3(70.4)				
XHS(m)5500	97.5(102.4)	766	360	622	144
XHS7500	101.4				
XHS10000	105				

